

**From:** Clark, Michael  
**Sent:** Friday, October 1, 2021 9:51 AM  
**To:** Clark, Michael  
**Subject:** Rockwell Elementary News October 1st, 2021



## Rockwell Elementary News



### Principal's Letter

#### **Principal's Letter- from the Librarian!**

Hello Beagles, this is the place you would normally see a note from our illustrious leader, Mr. Clark. However, this week he has offered me the spotlight as I share some news and upcoming opportunities!

**Fall Scholastic Virtual Book Fair**- this year we will be offering an online virtual book fair in the fall. We are discussing the fair in library classes and the students are all very excited. Here are the details:

**Virtual Book Fair dates- October 4th- 17th, 2021**

**Online Book Fair URL:** <https://www.scholastic.com/bf/rockwellbeagles>

25% of all sales goes directly the Rockwell Library to purchase new books!

Want to buy some books for your classroom? Check out the Teacher eWallet accounts here. If you don't see your teacher's name, remind them to create an account and check back later.

<https://lwsd->

[my.sharepoint.com/:x:/g/personal/shgordon\\_lwsd\\_org/EQh7SO8a-XxJqOnGY3RbvABIF-Ne-5Lys5-83xBmjDVmA](https://lwsd-my.sharepoint.com/:x:/g/personal/shgordon_lwsd_org/EQh7SO8a-XxJqOnGY3RbvABIF-Ne-5Lys5-83xBmjDVmA)

Elementary Laptop Agreement

Elementary Laptop Agreement Parent Letter



## Counselor's Corner

### Counseling Services Available for Rockwell Students

Rockwell is lucky to be partnering with YES again this year to support our Rockwell community. Youth Eastside Services (YES) is a local agency that provides mental health counseling, as well as other services, to students and families in our community. A counselor from YES will be available to provide ongoing mental health counseling to a limited number of students here at Rockwell during school hours. If you are interested in learning more about this opportunity for your Rockwell student, please contact our school counselor, Kristin Bauer, [kbauer@lwsd.org](mailto:kbauer@lwsd.org), for more information.

**Kristin Bauer** (she/her) | School Counselor

Norman Rockwell Elementary School

[kbauer@lwsd.org](mailto:kbauer@lwsd.org) | 425-936-2675 (direct)

*Giving Our Beagle Best Every Day: Safe, Respectful, Responsible and Kind*

**"Nobody cares how much you know, until they know how much you care."**

**~ Winston Churchill**



## LWSD Updates

### **Highly Capable Services for Elementary and Middle School Students**

Lake Washington School District (LWSD) will accept applications for Highly Capable programs from September 8 until 4:00 p.m. on October 1, 2021. Students must live in the Lake Washington School District to apply.

Please note: Pares of first-grade students attending LWSD schools should not apply during this application period. LWSD first-grade students are screened for Highly Capable Programs in their general education classrooms.

In order to ensure access for all families, we have recorded our yearly parent information presentation. The video and additional information about application timeline and services are available at <https://www.lwsd.org/programs-and-services/accelerated-programs/highly-capable-application>. Or contact us directly: 425-936-1238; [quest@lwsd.org](mailto:quest@lwsd.org).

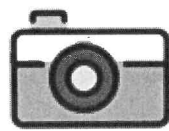
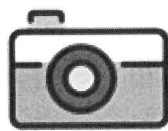
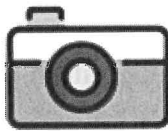
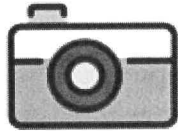
### **Too Sick for School**

One of the best ways to avoid community transmission of COVID-19, and other infectious illness, is to stay home when you are sick. Students and school employees who have symptoms of infectious illness, such as influenza (flu) or COVID-19 should stay home and seek medical evaluation, which may include testing for COVID-19 and other respiratory infections.

While the school will no longer require an attestation form at the start of each day, we ask families to please answer the following questions at home before deciding to send your child to school. If you answer "YES" to any of the following questions, keep your student home and contact your school.

1. Has your student been in close contact with anyone with confirmed COVID-19?
2. Does anyone in your household have COVID-19 like symptoms &/or is anyone in your household being tested for COVID-19?
3. Has your student or anyone in your household had a positive COVID-19 test for active virus in the past 10 days?
4. Within the past 14 days, has a public health or medical professional told your student to self-monitor, self-isolate or self-quarantine because of concerns about COVID-19?

For more information, please visit our "Too Sick for School Webpage": Too Sick for School - Lake Washington School District ([lwsd.org](https://www.lwsd.org))



## **Snapshots of Rockwell Learning**

### **Inclusion in Action:**

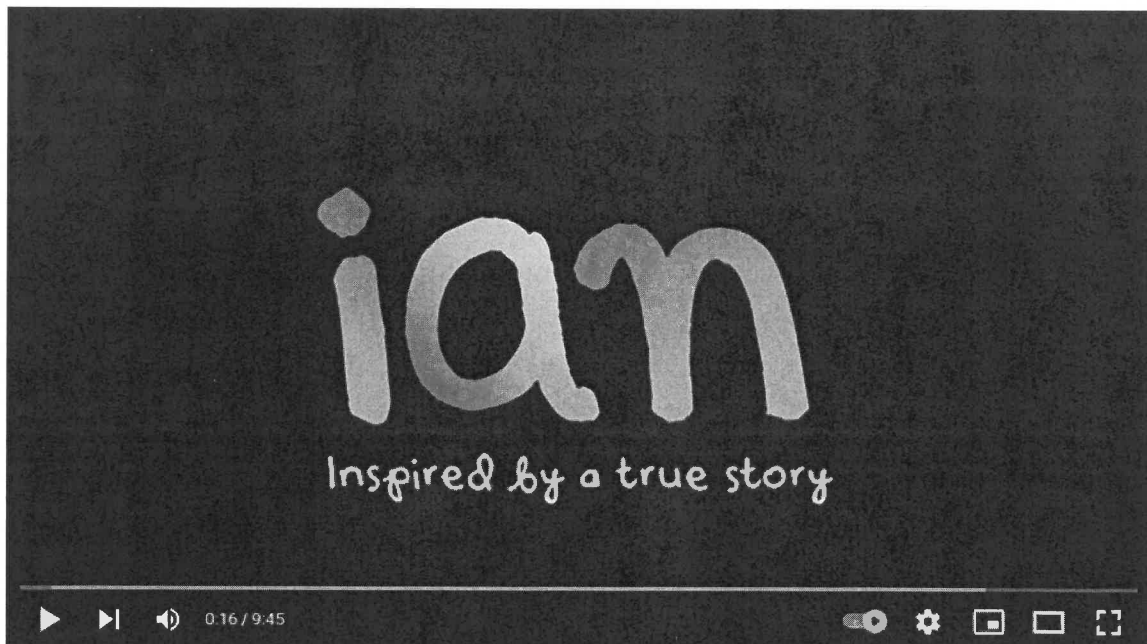
**As part of our Inclusion work, I have been joining all of our Intermediate classes to lead a lesson on inclusivity and the importance of treating all people with kindness, dignity, and respect. As part of the lesson we talk about how cool it is that there are so many different kinds of people at our school, and we talk about how we can make our school more kind and welcoming. We also watch and discuss a Disney short titled “Ia” (<https://www.youtube.com/watch?v=OHma93eZiBY>). I have been so impressed with the amazing things our students have had to say.**

# Inclusion = All of Us



*We all BELONG at Rockwell*

Norman Rockwell Elementary School



#CortoIan

ian | Corto Animado | Fundación Ian

7,329,300 views • Nov 30, 2018

99K 6.5K SHARE SAVE ...

<https://www.youtube.com/watch?v=OHma93eZiBY>

## PTSA Updates

### Highlights from your Norman Rockwell PTA:

The PTA would like to extend a heartfelt **thank you** to all the volunteers who helped make our welcome back picnic such a huge success. Countless volunteers helped at the grade level tables, helped with set-up and clean-up, helped to organize logistics, and helped to spread good cheer throughout the evening. We also want to thank all the teachers and staff who spent their precious free time (on a **Friday** evening, no less!) mingling with students and families. Even the weather cooperated! In case you missed it, Mayor Birney was on-hand to hand out some special awards to previous PTA board members and to current staff who were critical in helping your Norman Rockwell PTA achieve the “**School of Excellence**” designation from the National PTA. It was a wonderful evening, and we hope everyone enjoyed their time at the first PTA event of the year!

- It's not too late to donate to the ABC (Annual Beagle Contribution) fund. We are still several thousands of dollars short of our initial fundraising goal. **Please donate today** to help ensure that we can run all of our academic programs and events, and so that we can support all the academic and classroom grants that are requested this year. Click here to **donate now** (it's step #3 in the on-line welcome packet, after you join the PTA). As you'll see in the “Big Give” letter that went home in every student's first day packets, your PTA relies on ABC contributions to run our academic enrichment programs and to give grants to our teachers that supplement **every** student's learning opportunities.
- We are thrilled to announce that our **Reflections Art Competition** is starting soon. The Reflections program is a National PTA and Washington State PTA cultural arts competition which was started in 1969 and is the largest arts in education program of its kind in the United States. The purpose of the program is to provide an opportunity for students to use their creative talents by expressing themselves through their own original works, created around a specific theme. A student may submit an entry in any of the following six arts categories, or as a special artist (an option for students with disabilities who receive services under IDEA or Section 504):

a. Dance Choreography b. Film Production c. Literature d. Music composition e. Photography f. Visual arts. All artwork must be submitted digitally. **Check the PTA's website and the Bugle for details next week!** Make sure you're keeping track of your PTA's news! To sign up for our weekly newsletter, the Beagle Bugle, Click here. Please also "like" our Facebook page so you can see updates there (look for "Norman Rockwell Elementary PTA")

- Please consider volunteering your time to support our teachers and staff. Email [volunteering@normanrockwellpta.org](mailto:volunteering@normanrockwellpta.org) to find out more about our open committee chair positions, and the various ways to get involved.



## Rockwell Updates:

### Attendance Information

Please update your contact information for sending student attendance. use [StHatch@lwsd.org](mailto:StHatch@lwsd.org) *not* MMobley.

By 8:50am, use one of the three options (in order of preference) to notify Rockwell your student will be absent:

### Use Skyward –

Family Access

STACY HATCH My Account Email History Exit

SKYWARD

Attendance

Today's Attendance: Fri Sep 24, 2021

No Absences or Tardies were recorded for GREGORY

(REDMOND MIDDLE SCHOOL)

Date Attendance Period Class

No Absences or Tardies were found

Home

New Student Registration

Online Forms

Ethnicity/Race

Attendance

Student Info

Schedule

Absence Request

Use Safe Arrival phoneline: 425-936-2671

**Email:** [StHatch@lwsd.org](mailto:StHatch@lwsd.org)

Making vacation plans, changing contact information or moving? Contact [StHatch@lwsd.org](mailto:StHatch@lwsd.org)

**Pantry Packs:** Pantry Packs is a program that provides weekend packs of food for students in Lake Washington School District. Students participating in the Pantry Packs program receive a bag of food to bring home every Friday. Each Pantry Pack has enough food to feed one child for a weekend. If you would like to sign up for your child to be part of this program and receive a weekly pack of food, please complete the Pantry Pack Request Form linked [HERE](#). If you have any questions or would like more information about the program, please contact our school counselor, Mrs. Bauer at [kbauer@lwsd.org](mailto:kbauer@lwsd.org).

### **Drop-Off / Pick-Up / Parking Lot**

As we continue to get back into the groove of a new school year, here are a few reminders about the drop-off and pick-up process:

- Thank you to everyone who is walking, riding their bikes, or carpooling. We appreciate it!
- Please arrive no earlier than 8:35 and go directly to your line-up spot. Our playfields are closed before and after school.
- Buses only use the lane closest to the building.
- Drop off/pick-up is in the right lane of the upper lot. Please have all students exit from the right (passenger) side of your vehicle.
- The left lane of the upper lot is only for cars driving through or to park.
- Continuously pull forward – please do not park or let your child out if the car in front of you is moving.
- Reserved spaces are for staff – we have itinerant staff members who need to arrive just before the start of the day.
- Rockwell is an idle-free zone. Thank you for turning off your engines as you wait in the pick-up lane.

## **Student's Rights and Responsibilities**



Families: here is a link to our district Student Rights and Responsibilities page:  
<https://www.lwsd.org/programs-and-services/student-services/student-rights-and-responsibilities>. Please let Mr. Clark know if you have any questions. Thank you!



## Upcoming events

### Calendar

- October 11, 12, 14 – Fall Conferences - School is out at 11:50am.
- October 15 - October Leap (In-Service) Day for Staff: No School



## Quick Links

**For information on Free Wi-Fi for families, follow this link:**  
**LWSD Free Internet webpage**

### Resources for LWSD Families & Staff During School Closure

- Free Meals for Students
- Technology Support for Students & Families  
Email for Students: [ftaccess@lwsd.org](mailto:ftaccess@lwsd.org) or  
Email Address for Parents: [parentquestions@lwsd.org](mailto:parentquestions@lwsd.org)
- Educational Resources
- Child Care Resources



## Contact Info

Norman Rockwell Elementary

11125 162nd Avenue NE  
Redmond, WA 98052  
(425) 936-2670 Office  
(425-885-5528) Fax  
<https://rockwell.lwsd.org/>  
<https://normanrockwellpta.org/home>

Lake Washington School District | 16250 NE 74th St | Redmond, WA 98052

[Unsubscribe](#) | [Report Spam](#)

---

**DISCLAIMER:**

Lake Washington School District Confidentiality Notice: This email message, including any attachments, may contain confidential and privileged information. Any unauthorized review, use, disclosure, or distribution of privileged information, including information protected by Family Educational Rights and Privacy Act (FERPA) or other provision of law, is prohibited. If you are not the intended recipient, please contact the sender by e-mail and destroy all copies of the original message.